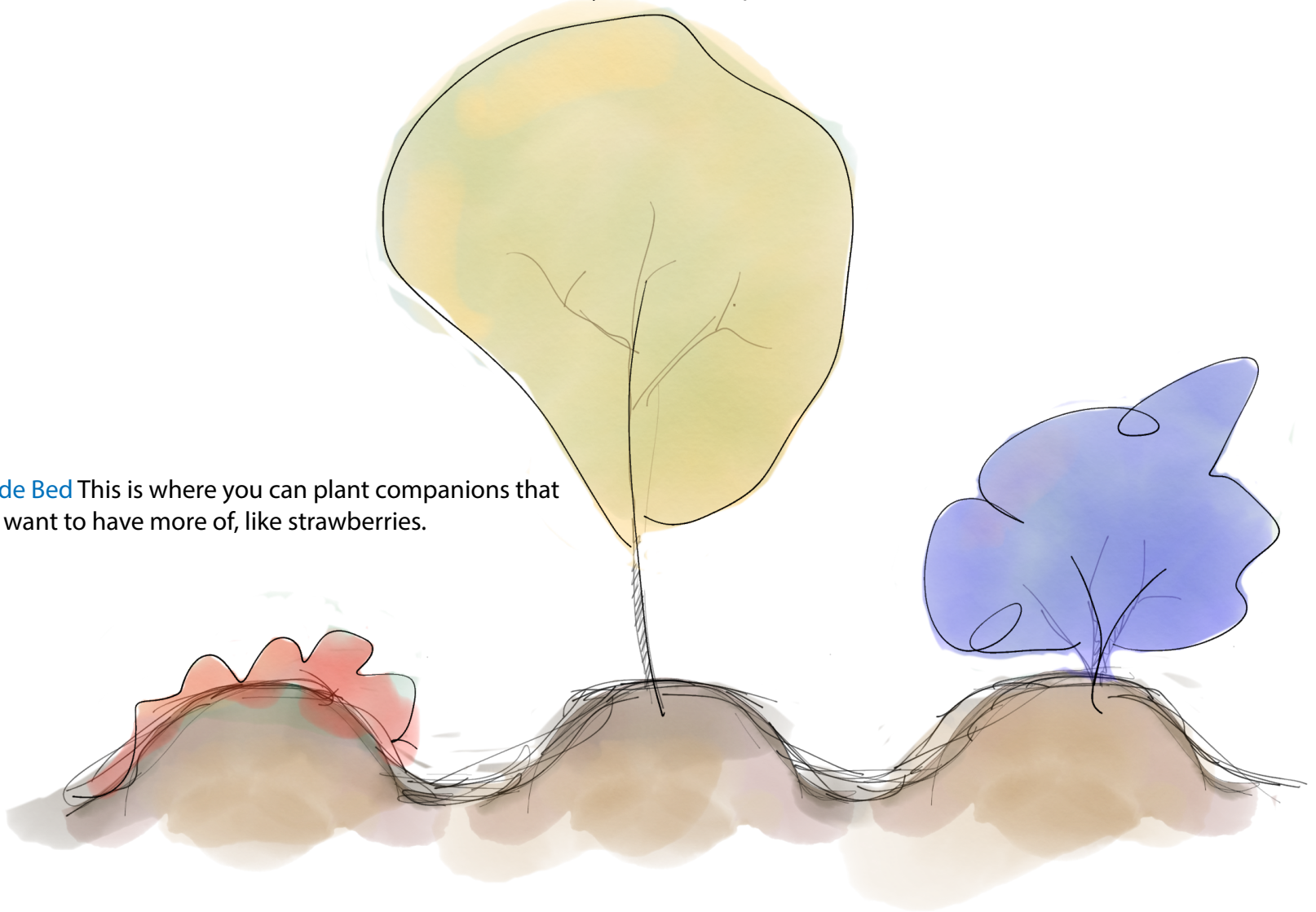


Triad Design

Once you begin to have multiple perennial garden beds, a system of triads becomes more relevant. A “triad” is any three garden beds that occur together. Triads become the main unit of guild design. This is because you can further organize perennials for success by defining which varieties occur in which of the three beds based on the overall design goals and unique considerations, such as access!

Center Bed This is often where you plant the largest trees, nut or fruit with their berry or herb companions in the same bed.

Sunny Side Bed This is where you can plant companions that you may want to have more of, like strawberries.



Strawberries, thyme, mint, lemon balm, and even asparagus will not be in the way when you want access for fall harvest!

Shady Side Bed This is where you can plant companions that you may want to have more of. For instance, a row of berries.

Accessibility

One of the core principles of design to consider for triads is access! You need access to your fruit, even with the paths between Perm-abled. A “Model Design” for using triads includes one bed for only low growing plants which can be harvested but can also easily be driven over by a tractor (for larger farms), a cart for homesteads, and even have a ladder to straddle it to assist with harvest.